

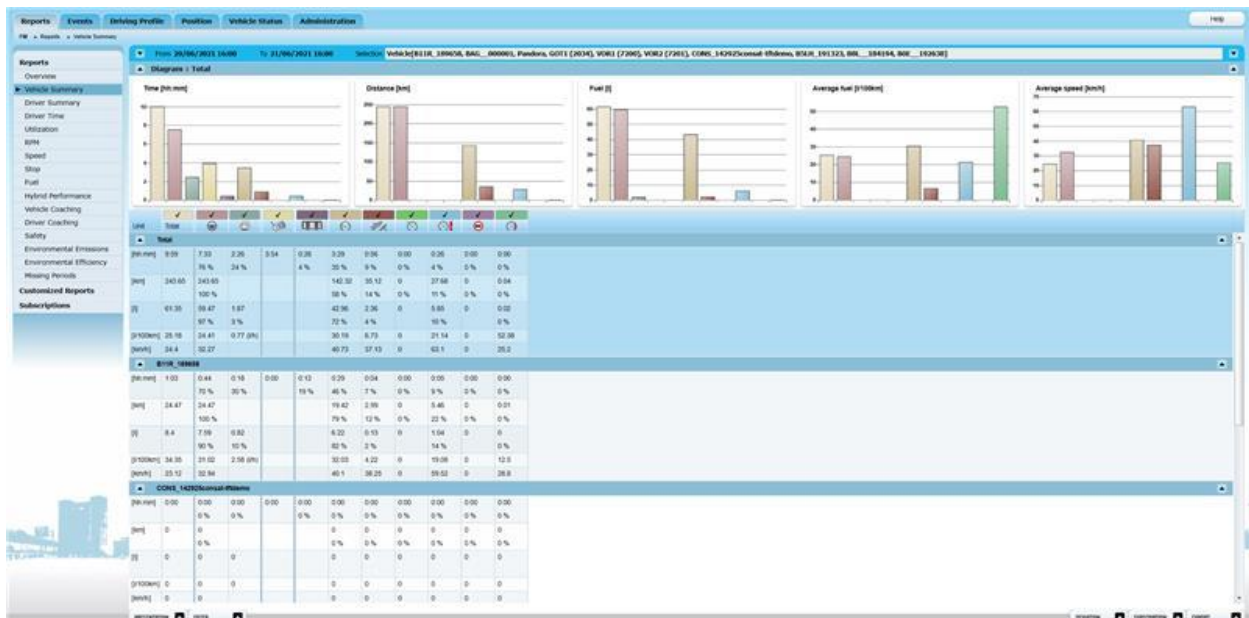
How to export historical data

Export Menu in Reports

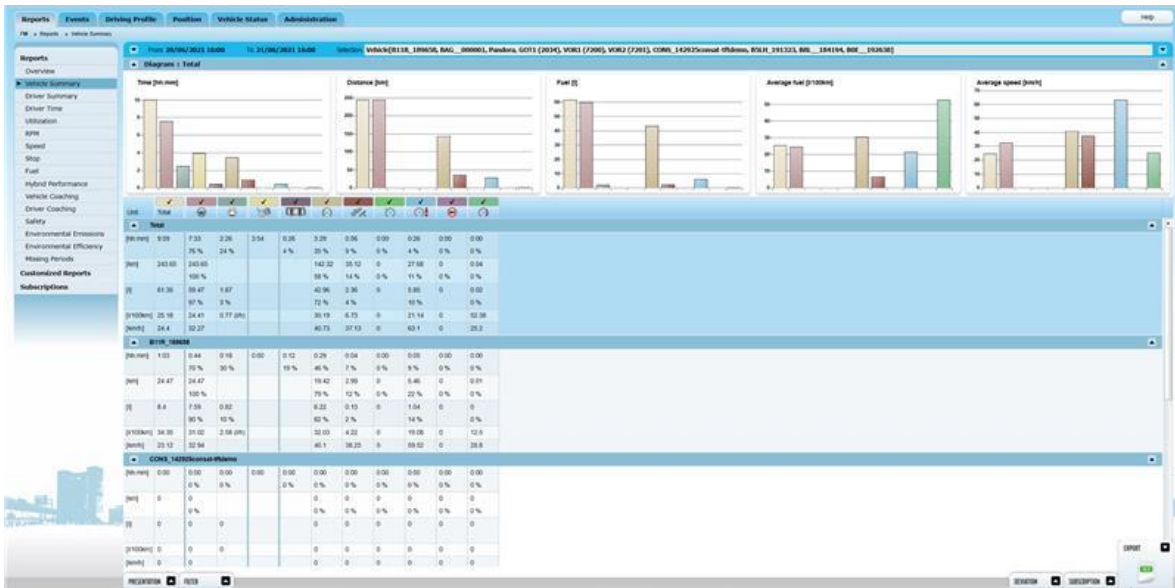
The report content can be exported in Excel format (.xls).

In the lower right corner, you will find an **expandable export menu**.

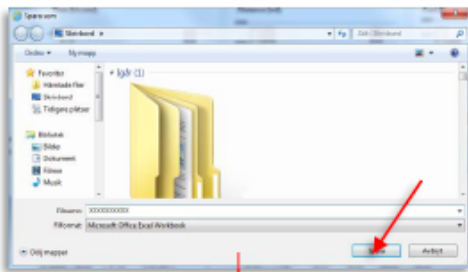
1. Click on the expand arrow button.



2. Click the XLS-symbol to export the report content.



3. A dialog will open. Select the location where you want your exported report file saved and click Save.



A screenshot of an 'Event Report' table. The table has columns for 'Time', 'Type', 'Event Information', 'Description', 'Vehicle', 'Driver', 'Speed (mi/h)', 'Odometer (mi)', 'Fuel used (l)', 'Fuel level (l)', 'Engine Coolant Temperature (°C)', 'Longitude (°)', 'Latitude (°)', and 'Altitude (ft)'. A red box highlights the 'Event Type' and 'Area' columns, with a red arrow pointing to the text 'Event Type and Area filter information, if applied'.

Time	Type	Event Information	Description	Vehicle	Driver	Speed (mi/h)	Odometer (mi)	Fuel used (l)	Fuel level (l)	Engine Coolant Temperature (°C)	Longitude (°)	Latitude (°)	Altitude (ft)
2009-09-10 10:10:10	Download			Volvo P1800G4002							15.85654	17.00000	
2009-09-10 10:10:10	Vehicle stop			Volvo P1800G4002			1762.75	19.00	90.00	97.00	15.85654	17.00000	0.00
2009-09-10 10:10:10	Vehicle stop			Volvo P1800G4002			1762.75	19.00	90.00	97.00	15.85654	17.00000	0.00
2009-09-10 10:10:10	Vehicle stop			Volvo P1800G4002			1762.75	19.00	90.00	97.00	15.85654	17.00000	0.00
2009-09-10 10:10:10	Vehicle stop			Volvo P1800G4002			1762.75	19.00	90.00	97.00	15.85654	17.00000	0.00
2009-09-10 10:10:10	Vehicle stop			Volvo P1800G4002			1762.75	19.00	90.00	97.00	15.85654	17.00000	0.00
2009-09-10 10:10:10	Vehicle stop			Volvo P1800G4002			1762.75	19.00	90.00	97.00	15.85654	17.00000	0.00
2009-09-10 10:10:10	Vehicle stop			Volvo P1800G4002			1762.75	19.00	90.00	97.00	15.85654	17.00000	0.00
2009-09-10 10:10:10	Vehicle stop			Volvo P1800G4002			1762.75	19.00	90.00	97.00	15.85654	17.00000	0.00
2009-09-10 10:10:10	Vehicle stop			Volvo P1800G4002			1762.75	19.00	90.00	97.00	15.85654	17.00000	0.00

Event Type and Area filter information, if applied

Exportable Reports

- Vehicle Summary
- Driver Summary
- Driver Time
- Utilization
- RPM
- Speed
- Stop
- Fuel
- Hybrid Performance
- Vehicle Coaching
- Driver Coaching
- Safety
- Environmental Emissions
- Environmental Efficiency

Exportable Events

- Latest Notifications
- Event Overview
- Event Report
- Passenger Load Report

Admin

Special note: Drivers and Vehicles, including settings, will be imported to Volvo Connect automatically. Vehicle and Driver Groups will not be imported so you can use this export tool to get your list of groups to manually add to Volvo Connect.

- Vehicle Administration and Vehicle Groups
- Driver Administration and Driver Groups